



Engaging the community and stakeholders on the Lord Howe Island Critical Infrastructure Program

Phase B Community and Stakeholder Engagement:
“What we heard”

Key Highlights

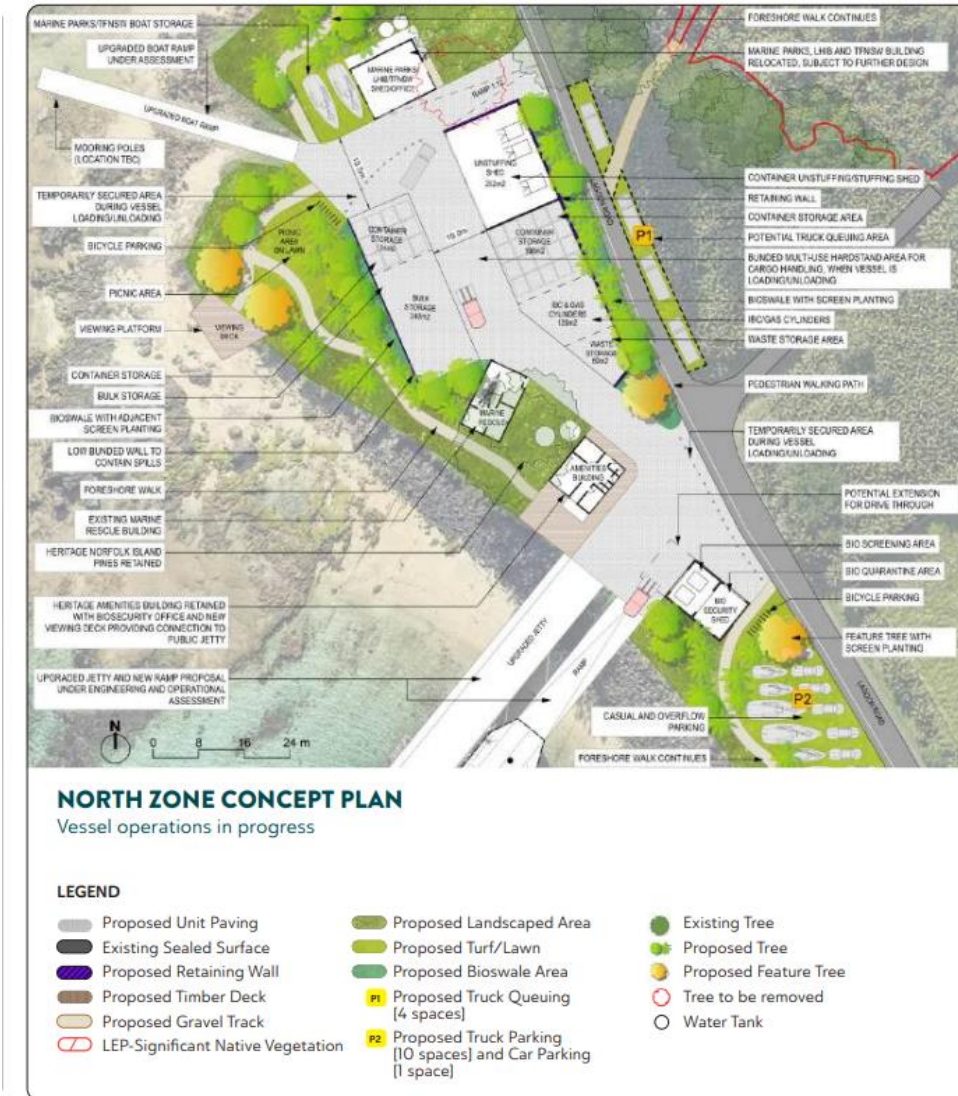
December 2024



North Zone: Maritime infrastructure and biosecurity infrastructure

Overall feedback

- General support for marine and biosecurity infrastructure in this location
- Widespread understanding of rationale for not continuing to pursue South Zone for this infrastructure
- Desire for concept design to be refined – to further improve safety and efficiency, while reducing congestion and potential conflicts



North Zone: Maritime infrastructure and biosecurity infrastructure

Potential refinements to the concept design

Key priorities

- Retain Ocean View shed / co-locate Marine Parks and Maritime Services storage
- Remove the proposed office building
- Retain the recently built Marine Rescue building
- Improve the boat ramp as an important community asset
- Increase space for truck/forklift/car/trailer movements / turning circles
- Resolve circulation of trucks and truck parking (to minimise need for turning and to seamlessly connect with surrounding road network)

Further initiatives

- Provide additional car/trailer/boat parking and maintenance in proximity to the boat ramp
- Reduce size of staging (cargo unloading/loading) area

“Everyone uses the boat ramp. It’s an important opportunity to benefit the Island’s community...”

North Zone: Maritime infrastructure and biosecurity infrastructure

Potential refinements to the concept design

Further initiatives (continued)

- Maintain public safety at all times during vessel operations; consider focusing the public walking path and picnic area to south of the jetty and ramp (once used for horse riding, cricket, watching the ocean and sunsets)
- Remove the proposed viewing platform (unnecessary and impacts on pristine landscape)
- Enhance the new public areas with unobtrusive bench seating and appropriate landscaping (a few suggested removal of trees, for e.g. Norfolk Island Pines and some vegetation to improve accessibility and views, while others suggested the addition of new landscaping to visually screen the marine infrastructure)
- Ensure general public watch the ship from a “safe” distance / include temporary fencing rather than bollards
- Test and accommodate the stormwater drain / culvert to ensure appropriate scale of built form
- Support drive through for forklifts, access for onboard inspections, and future innovations as part of biosecurity approach
- Explore potential to accommodate Australia Post boxes within the unstuffing shed (to reduce forklift movements, improve public safety, offer weather protection)
- Make the buildings / infrastructure look like they belong on the island (ie ensure they reflect the Island’s character)

“Recognise ‘Wilson’s Landing’ as a culturally significant area”...this is a great opportunity for cultural interpretation and telling the story of this being the place the flying boats landed...”

“The Program should fix the ‘bigger picture’ infrastructure issues...the post office is open for parcel collection at key times, causing congestion and safety issues with forklifts driving down the public road...”

Marine freight vessel

Overall feedback

- Widespread support for new freight vessel and contemporary approach, albeit with resistance to proposed approach from select stakeholders
- Strong interest in vessel sea worthiness, interface with marine infrastructure, containerisation, environmental impacts / lagoon access
- Support focus on mainland biosecurity arrangements
- Strong interest in time horizon for procurement / commencing operations, ongoing management and maintenance, customer experience and freight costs

“Lord Howe Island should be leading not following...”
[in terms of our approach to the Program]

“Love the idea of using shipping containers to move freight on and off the ship...which will help with biosecurity...”

“You’ve got to keep the lagoon deep and clean and address coral growth”



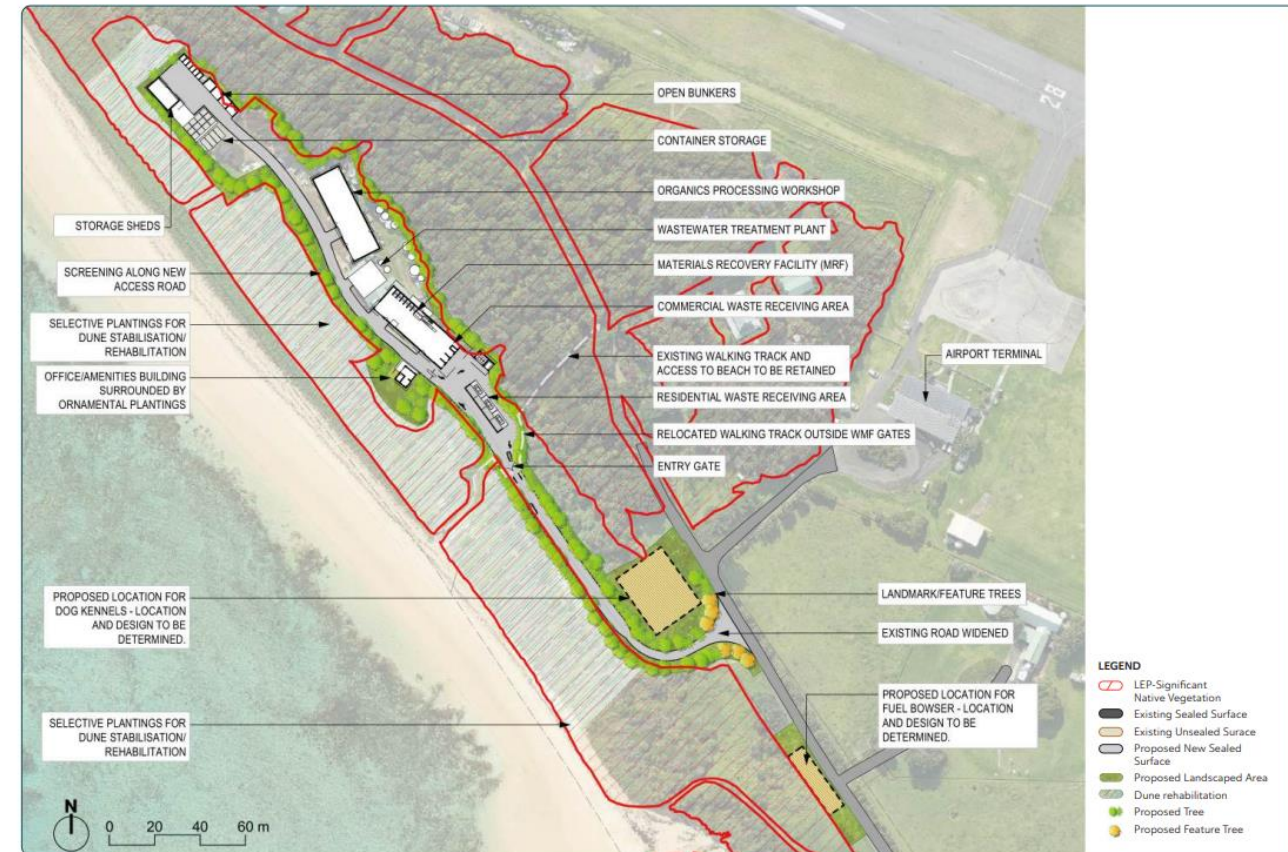
South Zone: Waste management facility and related infrastructure

Overall feedback

- General support for upgraded WMF and related infrastructure in this location
- Desire for site contamination to be managed effectively
- Desire for reuse of materials on island / off island wherever possible
- Interest in continuous improvement in terms of waste management and communications to support community/visitor education and behaviour
- Strong desire for concept design to be refined to further enhance user experience / neighbourhood amenity where possible



SOUTH ZONE
WASTE MANAGEMENT FACILITY MASTER PLAN



South Zone: Waste management facility and related infrastructure

Potential refinements to the concept design

- Consider use of materials and building techniques
- Move front gate slightly to north – to avoid conflict with existing dog walking track
- Test moving organics to the north end / away from the residential lease / residence
- Test using centre of WMF as staging area (ie closer to MRF, closer to drop off area for materials to be transported off island).
- Consider moving staff office closer to the front entry to enable staff to keep an eye out for any potential conflicts between bicycles/cars

“It’s well beyond time for the WMF to be improved”

“The more that can be reused the better...”

“Anything that improves the efficiency, odour and sustainability is good. And the design looks good – neat, clean and tidy – a real improvement on what we have now...”



South Zone: Waste management facility and related infrastructure

Potential refinements to the concept design (continued)

- Support the upgraded WMF through waste related communications and education (eg to increase understanding of how to appropriately separate plastics)
- Continue to explore opportunities for reuse of waste on island / off island
- LHIB to assist and encourage residents to do their own composting (eg bulk purchase of compost bins)
- Include fuel bowser in plans – to ensure it is set back from road, screened and not lit (to maintain dark skies)
- Include dog kennels in plans – explore potential

second location at BoM (tbc); consider animal welfare / wellbeing and acoustic treatment of new facility

- Retain ‘Revolve shop’ in a new location – move to town centre

“The more that can be reused the better...”

“People are really interested in our WMF... this is an opportunity to show visitors what we’re doing on Lord Howe...”



Thank you to everyone who participated in the consultations and shared your valuable feedback at the drop-in sessions.

We encourage all community members to provide any further feedback by 31 January 2025.

Email us

Please email your feedback to the Project Team at CIP@lhib.nsw.gov.au.